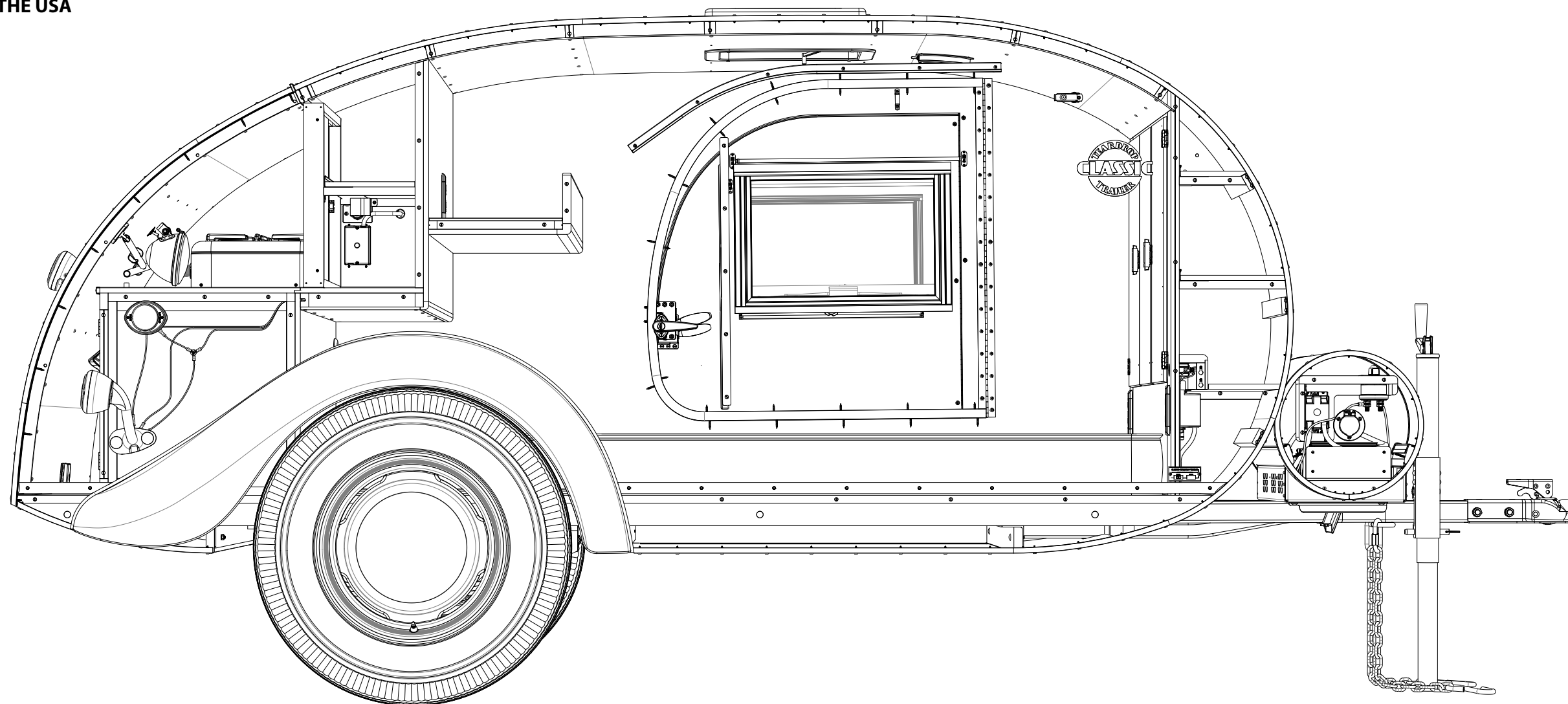


CLASSIC TEARDROP TRAILER

CONSTRUCTION AND PLANS SUPPORT MANUAL

NORMAN J. BOULARD



CLASSIC TEARDROP TRAILER

CONSTRUCTION AND PLANS SUPPORT MANUAL

NORMAN J. BOULARD

FOR MY CHILDREN AND GRANDCHILDREN, WHO INSPIRE ME

FIRST EDITION

TEXT, ILLUSTRATIONS, AND IMAGES © 2017 NORMAN J. BOULARD

ALL RIGHTS RESERVED. NO PART OF THIS BOOK MAY BE
REPRODUCED OR SHARED BY ANY MEANS WITHOUT WRITTEN
PERMISSION FROM NORMAN J. BOULARD.

CONTENTS

| | |
|------------------------------------|---------|
| 1. ACKNOWLEDGMENTS | PAGE 3 |
| 2. INTRODUCTION | PAGE 4 |
| 3. ASSEMBLY ORDER AND INSTRUCTIONS | PAGE 5 |
| 4. ASSEMBLY OAL DIMENSIONS | PAGE 54 |
| 5. BOM RAW MATERIALS | PAGE 60 |
| 6. BOM PURCHASED COMPONENTS | PAGE 78 |
| 7. BOM PURCHASED HARDWARE | PAGE 80 |
| 8. DRAWINGS LIST | PAGE 82 |
| 9. DESIGN DETAILS EPILOGUE | PAGE 92 |
| 10. APPENDIX | PAGE 96 |
| 11. LOGO DESIGN | PAGE 97 |
| 12. EQUIVALENTS TABLE | PAGE 98 |

ACKNOWLEDGMENTS

SPECIAL THANKS TO MY WIFE, JOYCE, FOR SUPPORTING ME, AND ENDURING THE MANY LONG HOURS OF HARD WORK TO BRING THIS PROJECT TO FRUITION. WITHOUT HER SUPPORT THIS PROJECT WOULD NOT HAVE BEEN POSSIBLE.

THANKS TO NICK TAYLOR FOR SHARING PHOTOGRAPHS, DIMENSIONS, AND DETAILS OF HIS TRAILER, #483, AS WELL AS OTHER TRAILERS THAT HE CAME ACROSS DURING HIS TRAVELS.

AMALIN FERGUSON, THANK YOU FOR SHARING PHOTOGRAPHS, DIMENSIONS, PARTS, AND DETAILED INFORMATION ON YOUR TRAILER, #527. THANK YOU, WALTER J. MEERSCHAERT, FOR TAKING THE PHOTOGRAPHS OF AMALIN'S TRAILER.

THANK YOU, MARC ZOCHER, FOR ALLOWING ME TO MEASURE, DOCUMENT, AND PHOTOGRAPH SEVERAL ORIGINAL COMPONENT ASSEMBLIES AND DETAILS ON YOUR TRAILER, #234.

THANK YOU, ROBERT BLEDSOE, FOR PROVIDING INDUSTRIAL DESIGN SUPPORT.

THANK YOU, MARK HOULE, FOR YOUR ELECTRICAL & WIRING HARNESS SYSTEM DESIGN GUIDANCE.

THANK YOU, MARK WARREN, FOR DESIGN DEVELOPMENT OF THE 3RD BRAKE LIGHT SYSTEM.

THANK YOU, KEVIN MASSON, FOR ALUMINUM FENDER AND BUCK DESIGN GUIDANCE.

SPECIAL THANKS TO STEPHEN ZWANZIG FOR ENGINEERING SUPPORT, FEA TESTING, DRAWING & CONSTRUCTION MANUAL REVIEWS, AND BUILDING A TRAILER TO VERIFY DETAILS AND EFFICIENCY OF THE PLANS.

SPECIAL THANKS TO DEANNA BOULARD FOR REVIEWING AND EDITING THE COPY IN THIS MANUAL.

THANK YOU TO ALL WHO HAVE PURCHASED THESE PLANS. MAY YOU ENJOY A FLAWLESS BUILD AND HAPPY TRAVELS IN YOUR CLASSIC TEARDROP TRAILER.

INTRODUCTION

THESE CLASSIC TEARDROP TRAILER PLANS INCORPORATE DESIGN, MATERIALS, AND CONSTRUCTION METHODS USED DURING THE 1940S. THE TRAILER FEATURED IN THESE PLANS IS A 5-FOOT-WIDE DESIGN INTERPRETATION, HEAVILY INFLUENCED BY THE CLASSIC 4-FOOT-WIDE 1946-47 KEN-SKILL MODEL 10 TEARDROP TRAILER. MEASUREMENTS FOR THESE PLANS ORIGINATE FROM TRAILERS #483 AND #527, WHICH ARE ORIGINAL AT THE TIME OF THIS WRITING. ALTHOUGH THESE TRAILERS HAVE SOME ADDED WIRING OR ROOF VENT UPDATES, THEY ARE NOT REBUILT INTERPRETATIONS. SOME ORIGINAL MANUFACTURED PARTS WERE MEASURED FROM ONE REBUILT TRAILER, #234. ADDITIONALLY, SOME PARTS MEASURED AND DOCUMENTED WERE NOS (NEW OLD STOCK) PARTS SOURCED THROUGH INTERNET SEARCHES. MOST PARTS ARE METAL, AS THEY WERE ON THE ORIGINALS, AND FUNCTION EXACTLY AS THEY DID IN THE 1940S. THE MAIN GOAL IN CREATING THESE PLANS WAS TO MAINTAIN THE ORIGINAL DESIGN AND CAMPING FLAVOR FROM THAT TIME PERIOD. HOWEVER, SOME SPECIFIC FEATURES AND DETAILS WERE UPDATED TO CURRENT DESIGN AND SAFETY STANDARDS. SAFETY REGULATIONS, AS THEY RELATE TO EXTERIOR LIGHTING AND TRANSPORTING OF FUEL, WERE THE MAIN REQUIRED UPDATES. WATER SAFETY ISSUES ALSO REQUIRED MATERIAL CHANGES. ELECTRICAL OUTLETS WERE ADDED WITH ALL CONNECTIONS GROUNDED, CEILING AND ICEBOX INSULATION ARE UPDATED. MOST CHANGES ARE MECHANICAL OR HIDDEN TO THE UNTRAINED EYE. YOUR TRAILER SHOULD LOOK AND FEEL LIKE IT CAME RIGHT OUT OF THE MID-1940S.

WELCOME TO CLASSIC TEARDROP TRAILER

CONGRATULATIONS ON PURCHASING THE MOST PRECISE, COMPREHENSIVE CLASSIC TEARDROP TRAILER PLANS AVAILABLE ON THE MARKET TODAY. WE ARE CONFIDENT THESE PLANS WILL PROVIDE YOU WITH THE INFORMATION AND INSPIRATION THAT YOU NEED TO ENJOY YOUR BUILD EXPERIENCE. THERE SHOULD BE NO GUESSWORK WHEN BUILDING YOUR TRAILER DUE TO UNFORESEEN ISSUES THAT ARISE WHEN USING VAGUE OR INCOMPLETE PLANS. THE LEVEL OF DETAIL INCLUDED IN THESE PLANS SHOULD ENABLE YOU TO MAKE ALL OF THE PARTS AND ASSEMBLIES WITHOUT HAVING TO REMAKE OR REDO ANY PART OR ASSEMBLY. PLEASE CONTACT US AT CLASSICTEARDROPTRAILER.COM IF YOU HAVE ANY QUESTIONS OR ADDITIONAL INPUT THAT YOU'D LIKE TO SHARE. ENJOY YOUR BUILD EXPERIENCE!

IMPORTANT NOTES AND INSTRUCTIONS

MANUAL & DRAWINGS

EACH ASSEMBLY AND PART DRAWING IS DIMENSIONED, HAS ITS OWN MATERIAL AND TECHNICAL SPECIFICATIONS, WITH BRIEF INSTRUCTIONS PROVIDED IF NEEDED. THIS MANUAL IS DESIGNED TO COMPLEMENT THE DRAWINGS. ADDITIONAL DIMENSIONS OR INFORMATION NEEDED DURING THE BUILD ARE PROVIDED IN THIS MANUAL. IF CLARIFICATION OF SPECIFIC DETAILS ARE NEEDED, YOU WILL NOTICE SOME OVERLAP IN DRAWINGS. IN SOME CASES, WHEN THERE ARE MIRRORED PARTS OR ASSEMBLIES, A DUPLICATE DRAWING WAS CREATED FOR CLARITY AS WELL.

CONSTRUCTION NOTES

STEEL TRAILER FRAME

THE STEEL TRAILER FRAME REQUIRES A SKILLED METAL WORKER AND EXPERIENCED WELDER TO

FABRICATE. IF YOU DO NOT HAVE THE TOOLS OR ABILITY TO DO THIS WORK, HIRE A LOCAL WELDING SHOP. ALTERNATELY, OUR TRAILER FRAMES USE HIGH QUALITY STEEL COMPONENTS, ARE WELDED ACCURATELY USING A FIXTURE, AND CAN BE ORDERED FROM CLASSICTEARDROPTRAILER.COM.

KITCHENETTE CABINET/CLOSET CASEWORK

TYPICALLY IN THIS ERA, CABINET CASEWORK COMPONENTS WERE ASSEMBLED USING GLUE, FINISH NAILS, AND SCREWS. METAL FASTENERS ARE USED TO HOLD WOOD PARTS IN PLACE AS THE GLUE JOINTS SET, ADDING CREEP RESISTANCE. WITH THE EXCEPTION OF SHOWING WHERE CORRUGATED FASTENERS COULD BE USED, THE PLANS LEAVE CASEWORK CONSTRUCTION OPEN TO YOUR CHOSEN METHOD. CABINET JOINERY CONSTRUCTION METHODS COULD INCLUDE SPLINE, DOWEL, OR BISCUIT JOINERY, WITH A POCKET & SELF-DRILLING SCREW SYSTEM.

CABINET DOORS

DOORFRAME CORNERS AS DESIGNED IN THIS ERA WERE GLUED AND STAPLED, OR USED CORRUGATED FASTENERS. GLUING END GRAIN ALONE THAT IS CUT AT A 45° ANGLE IS POSSIBLE, BUT NOT GENERALLY GOOD PRACTICE TO RELY ON. CONSIDER THE EXPANSION AND CONTRACTION OF WOOD THROUGH EACH SEASON AND NOTICE THAT THE FRAMES ARE NAILED INTO PLACE ON THE DOOR PLYWOOD BACK FACES. THEY ARE NOT GLUED TO THE DOOR PLYWOOD BACK FACE.

WOOD GLUE

USE GLUES DESIGNED FOR EXTERIOR APPLICATIONS. GLUE SET TIMES ARE CRITICAL FOR STRONG WOOD JOINTS SO WHEN GLUING LARGER PLYWOOD PANEL ASSEMBLIES, USE A SLOWER SETTING POLYURETHANE OR POLYVINYL ACETATE (PVA) GLUE. IF USING A STRATEGY TO EXTEND GLUE SET TIMES SUCH AS REFRIGERATING TO A LOWER SPECIFIC TEMPERATURE, OR BY THINNING 5% WITH WATER, CONTACT YOUR GLUE MANUFACTURER AND BE SURE TO USE AN APPROVED METHOD.

CONSTRUCTION ADHESIVE

WHEN SECURING THE SIDE PANELS TO THE OUTER FLOOR SUPPORTS, KITCHENETTE CABINET ASSEMBLY, CLOSET ASSEMBLY, AND ROOF SUPPORTS, USE A POLYURETHANE CONSTRUCTION ADHESIVE WITH THE SPECIFIED SCREWS. THIS TYPE OF ADHESIVE ADDS STRUCTURAL RIGIDITY TO THE TRAILER AND PARTS OR ASSEMBLIES CAN BE SEPARATED DURING FUTURE SERVICE OR REPAIRS. CONSTRUCTION ADHESIVE SHOULD EXCEED ASTM D-3498 AND ASTM C-557 SPECIFICATIONS.

ALUMINUM

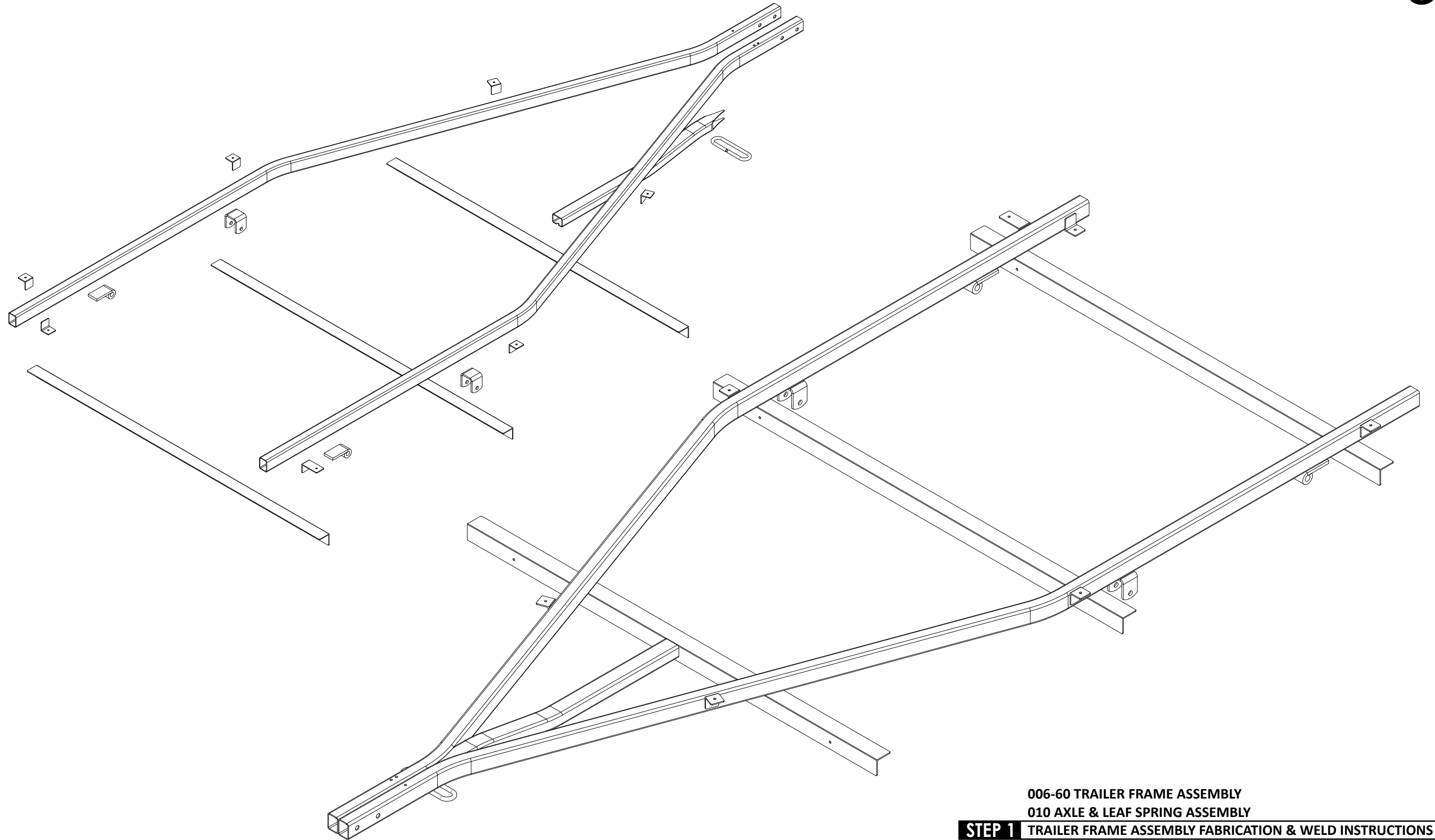
IT IS GOOD PRACTICE TO BUILD FIXTURES TO FORM ALUMINUM PROFILES AROUND A SHAPE BEFORE INSTALLING INTO AN ASSEMBLY. YOU MAY FIND NEED FOR THIS, ESPECIALLY ON THE DOORS AND PLYWOOD/ALUMINUM SIDE OPENING TRIM. EXTRUSIONS ARE GENERALLY AVAILABLE IN LENGTHS THAT CAN BE SHIPPED COST-EFFECTIVELY, SO YOU MAY WANT TO CONSIDER BRAZING THE EXTRUSION ENDS TOGETHER FOR LONGER LENGTHS IF NEEDED.

DEPARTMENT OF MOTOR VEHICLES [DMV]/CERTIFIED ENGINEER

TO MEET SAFETY STANDARDS, FAMILIARIZE YOURSELF WITH DMV REQUIREMENTS IN YOUR STATE OR PROVINCE, AND CONSULT WITH A CERTIFIED PROFESSIONAL ENGINEER DURING YOUR BUILD.

AS YOU BEGIN

READ THE **DESIGN DETAILS EPILOGUE** IN SECTION 9 TO GET A SENSE OF HOW THESE TRAILERS WERE TYPICALLY DETAILED AND WHY, THEN... ENJOY YOUR BUILD!

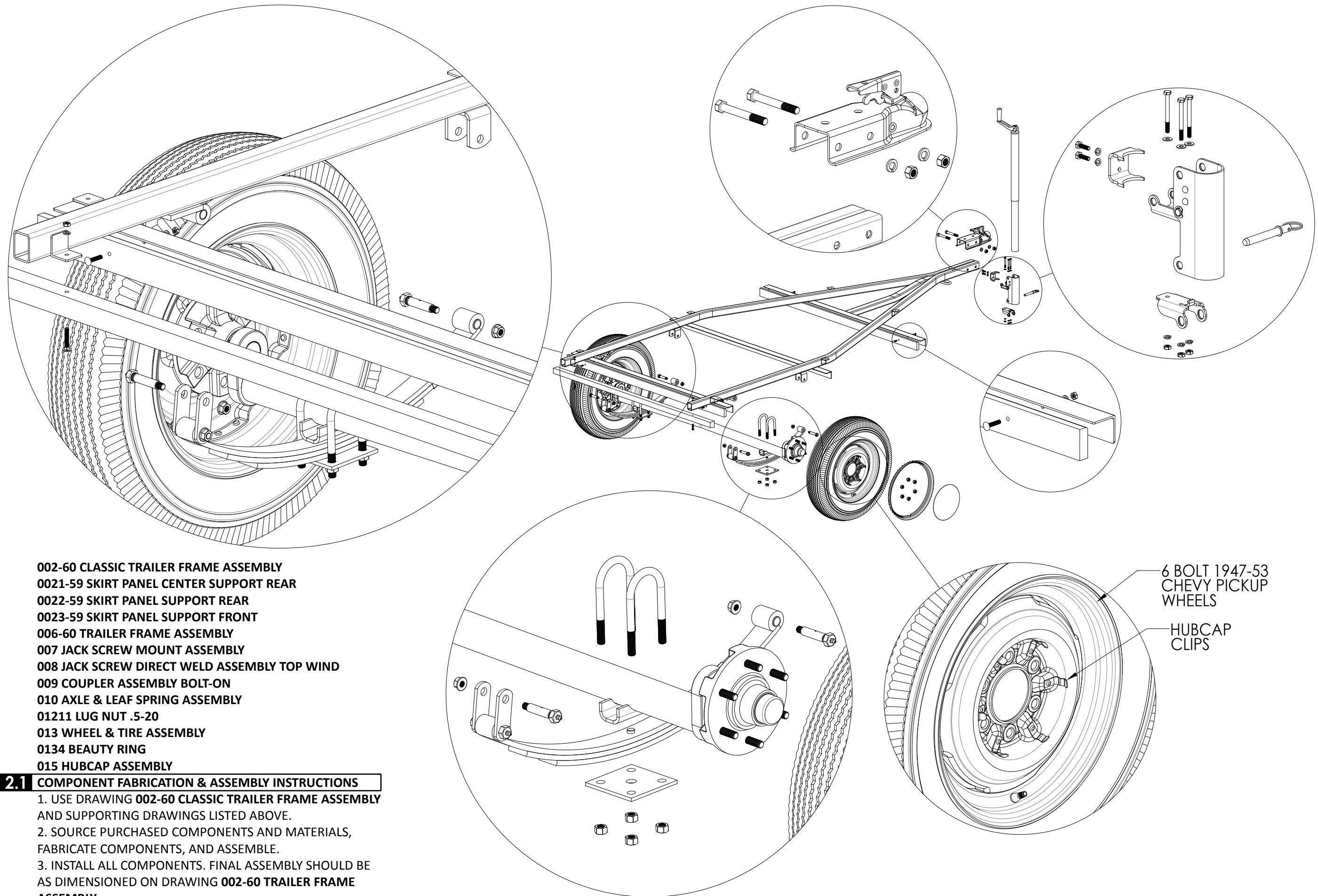


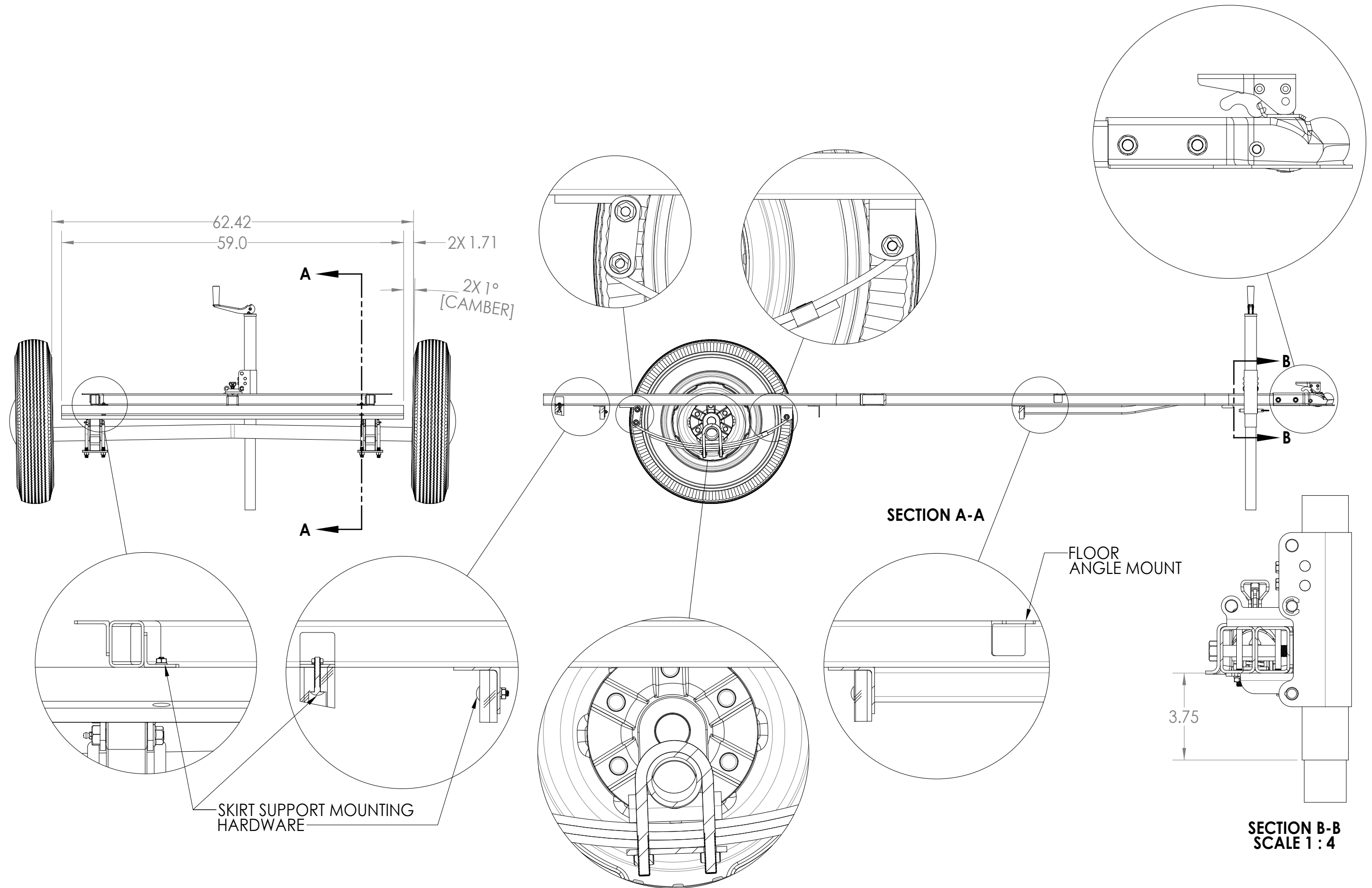
*** IF YOU DO NOT HAVE ANY EXPERIENCE WELDING,
HIRE THE SERVICES OF A PROFESSIONAL WELDER.**

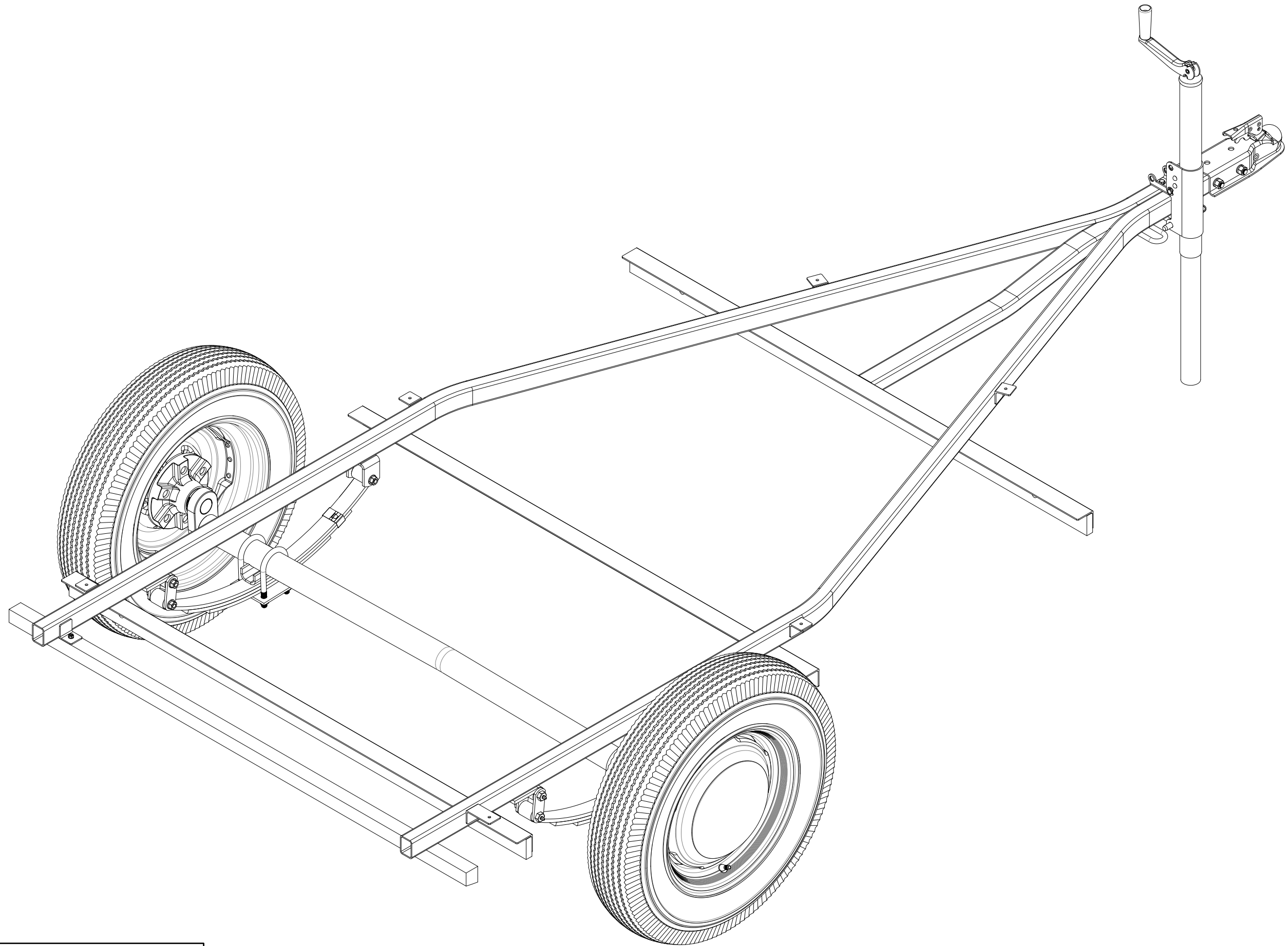
**006-60 TRAILER FRAME ASSEMBLY
010 AXLE & LEAF SPRING ASSEMBLY**

STEP 1 TRAILER FRAME ASSEMBLY FABRICATION & WELD INSTRUCTIONS

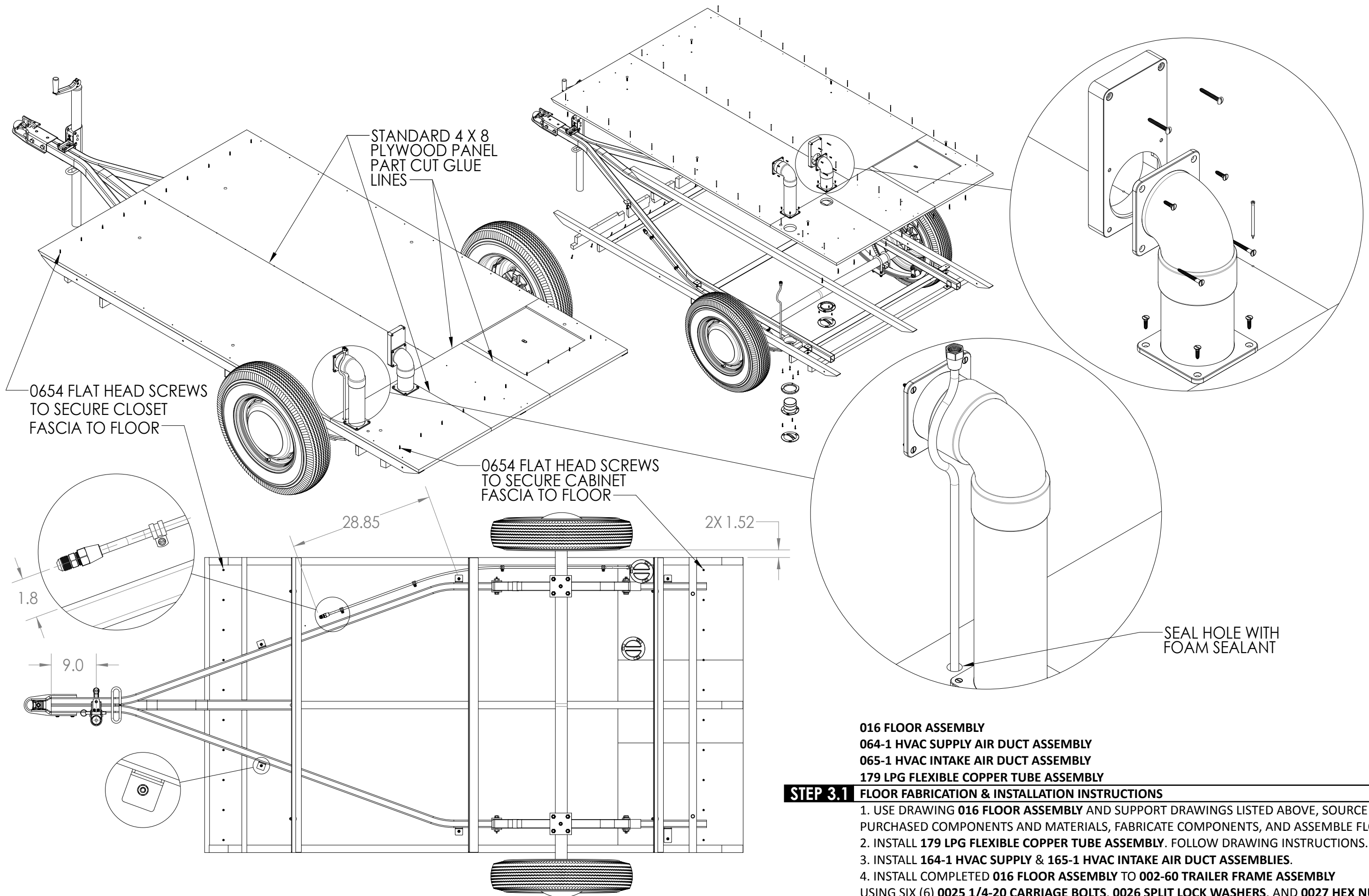
1. USE DRAWINGS LISTED ABOVE WITH SUPPORT DRAWINGS LISTED IN THE BOM, (BILL OF MATERIALS) FOR REFERENCE AND DIMENSIONS.
2. SOURCE MATERIALS, PURCHASE COMPONENTS, FABRICATE, AND *WELD ASSEMBLY ACCORDING TO LATEST **AWS D1.1** STANDARDS.
3. CLEAN, PREP, AND PAINT COMPLETED FRAME ASSEMBLY.

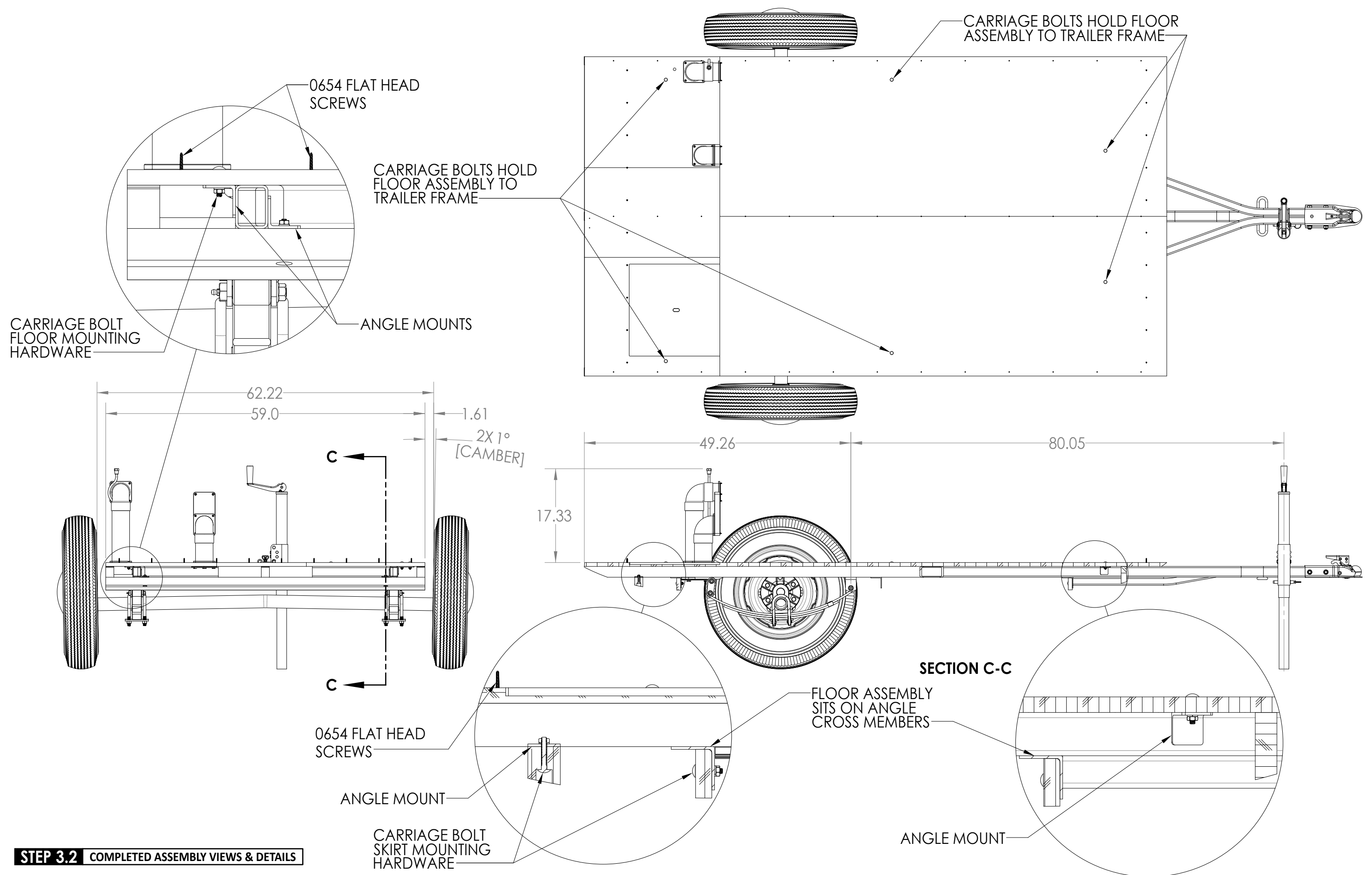


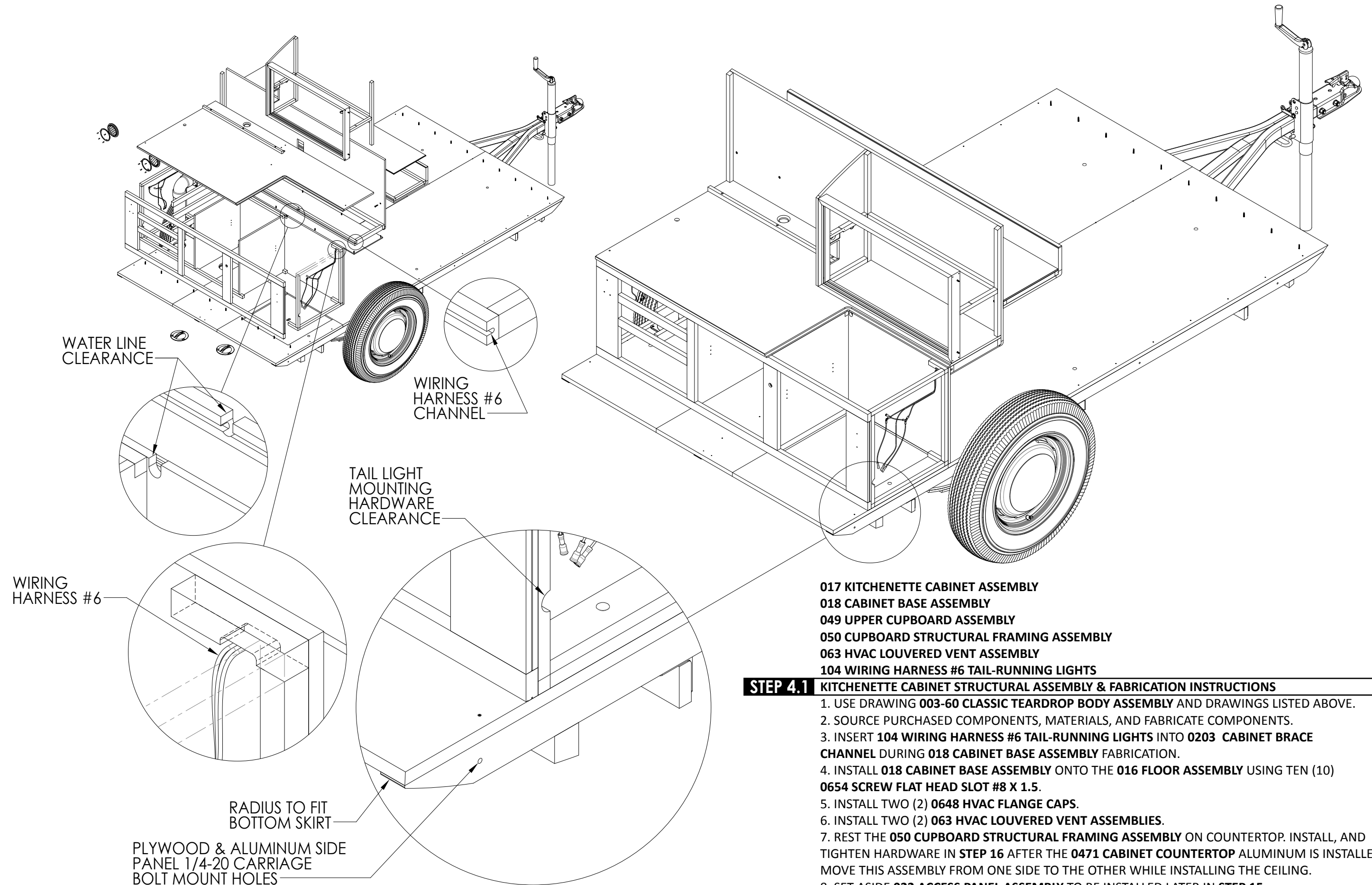


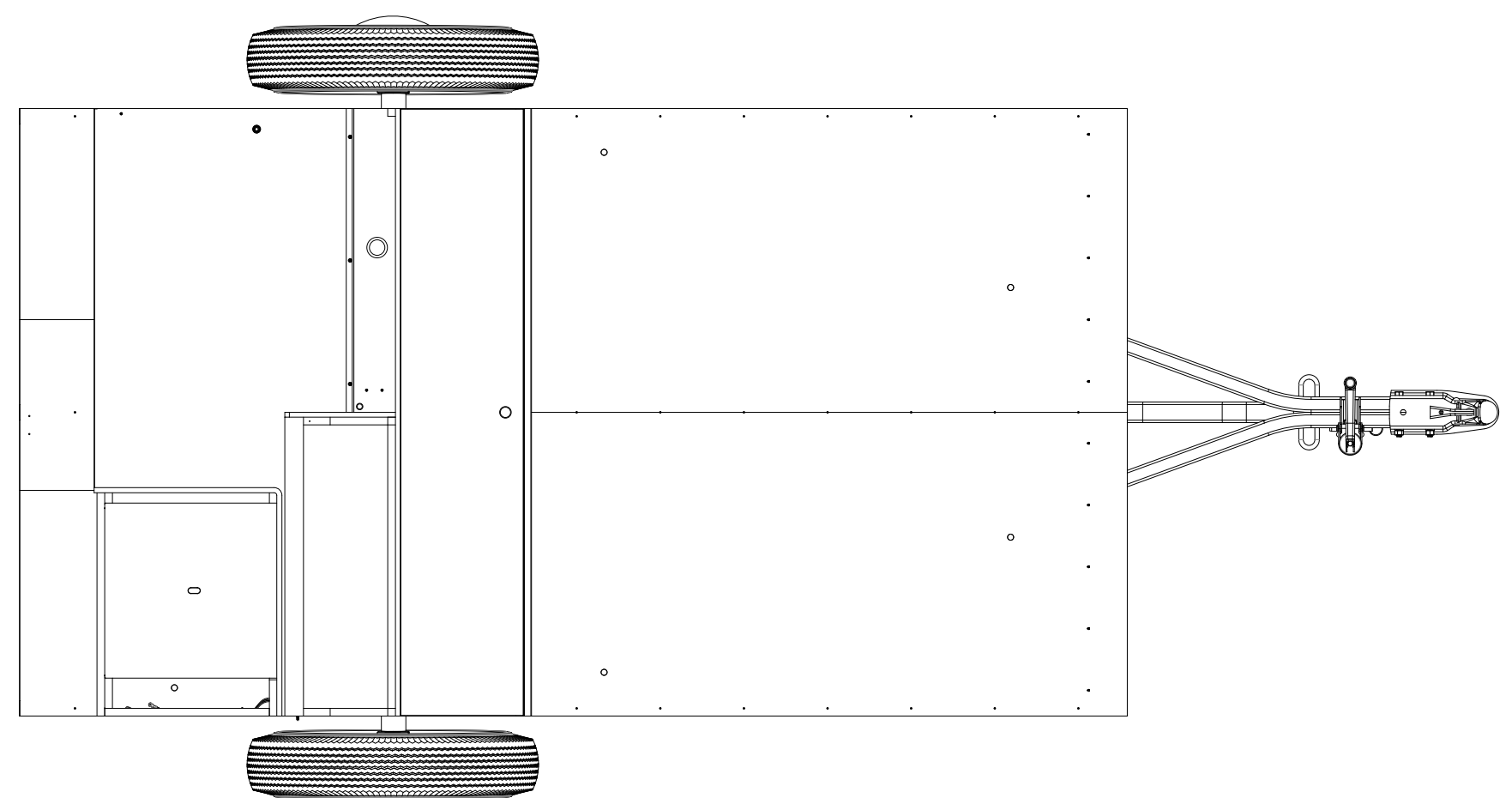


STEP 2.3 COMPLETED TRAILER FRAME ASSEMBLY

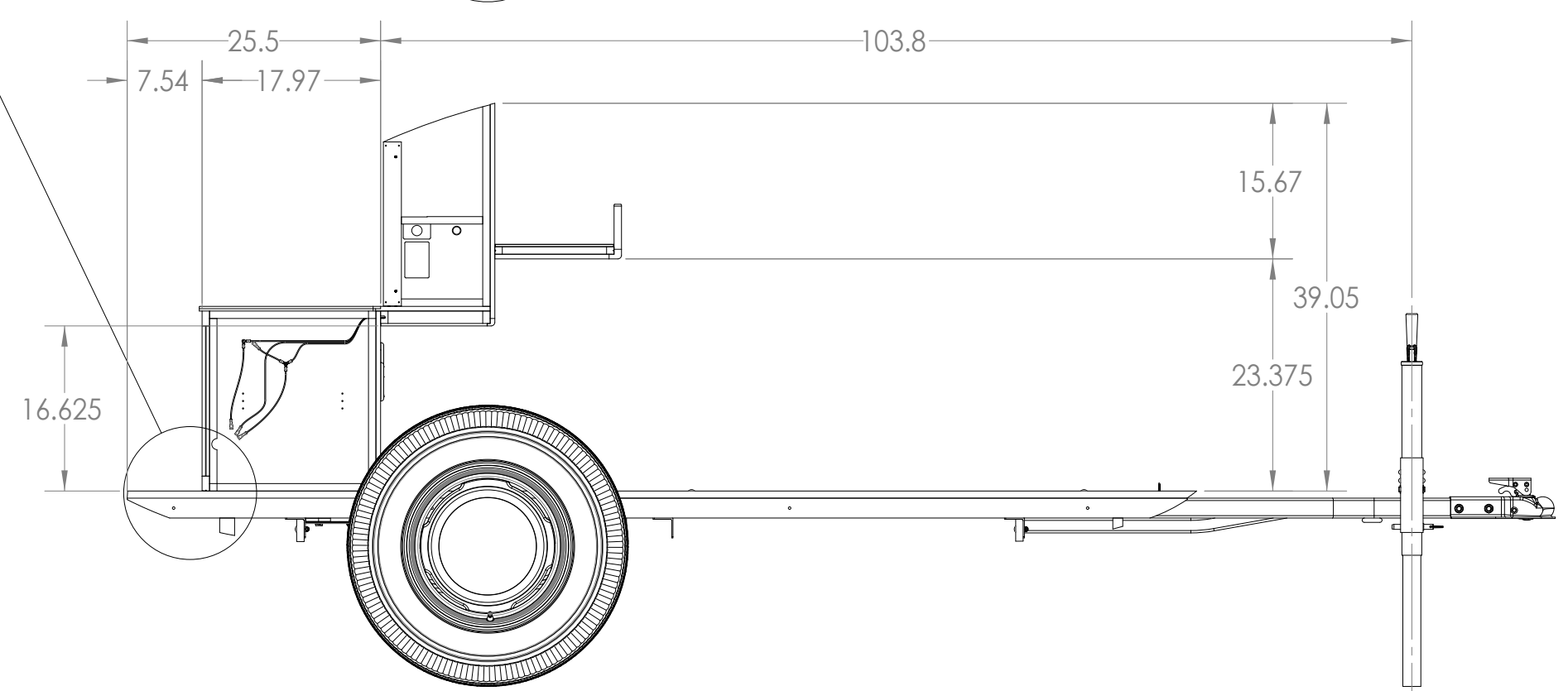
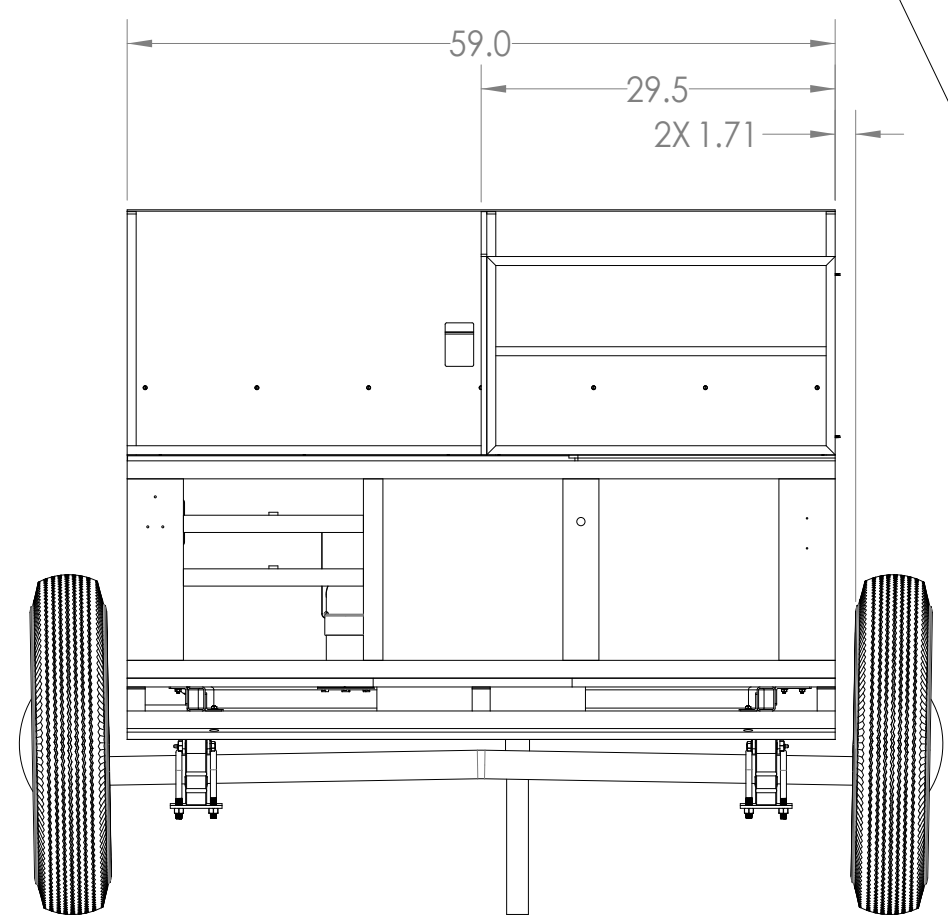




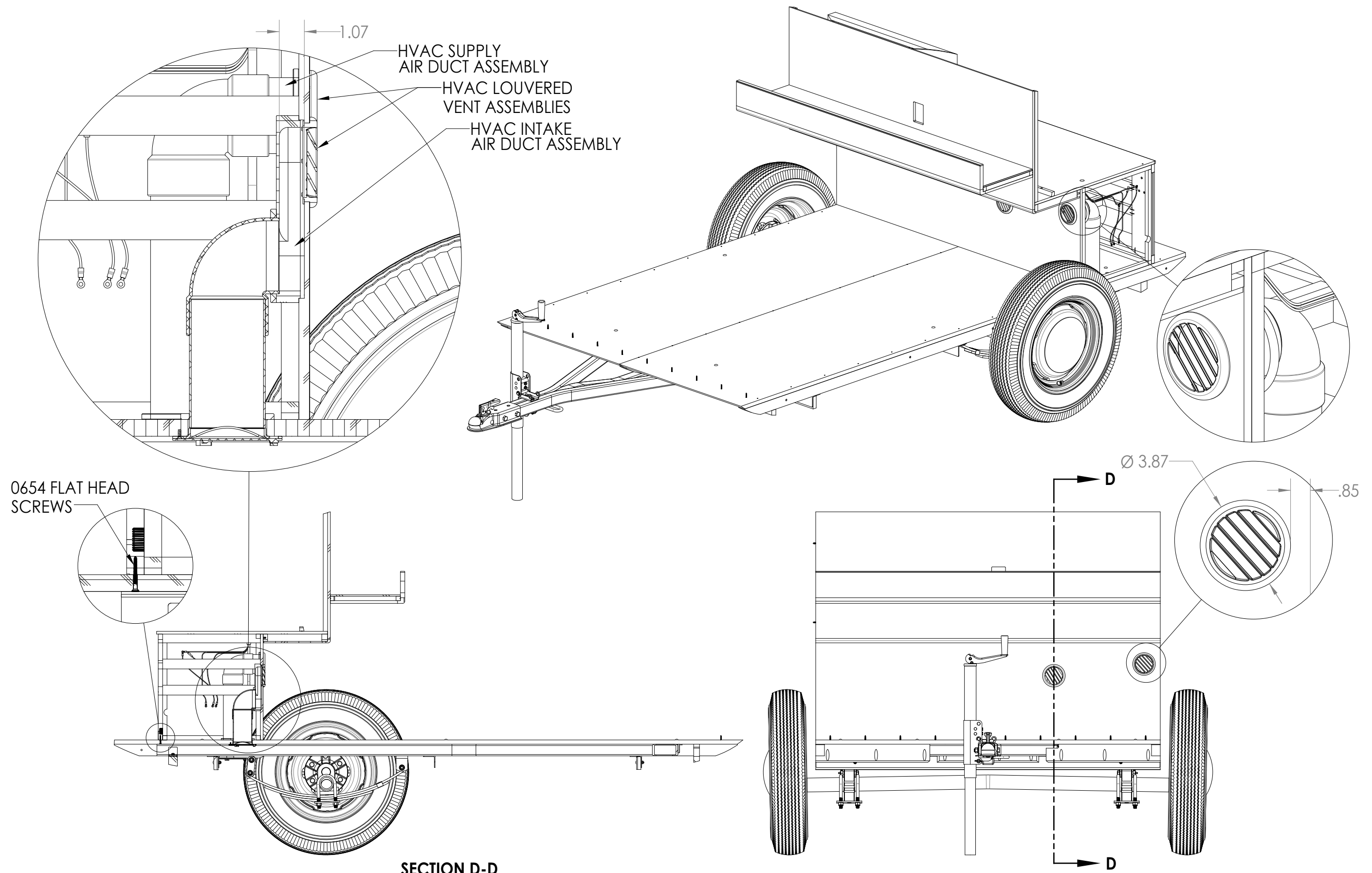




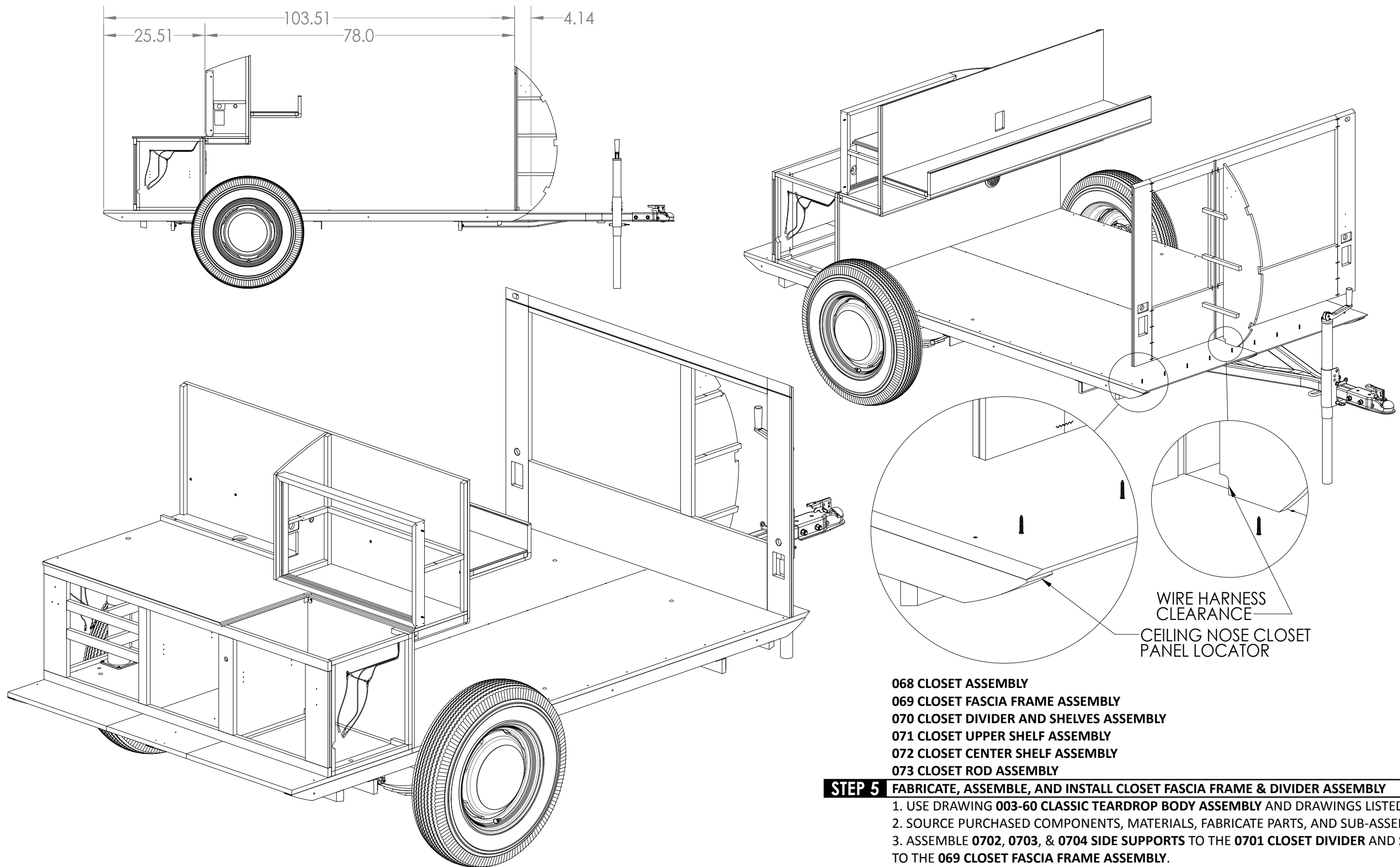
PLYWOOD & ALUMINUM SIDE
 PANEL 1/4-20 CARRIAGE
 BOLT MOUNT HOLES



STEP 4.2 COMPLETED ASSEMBLY VIEWS & DETAILS

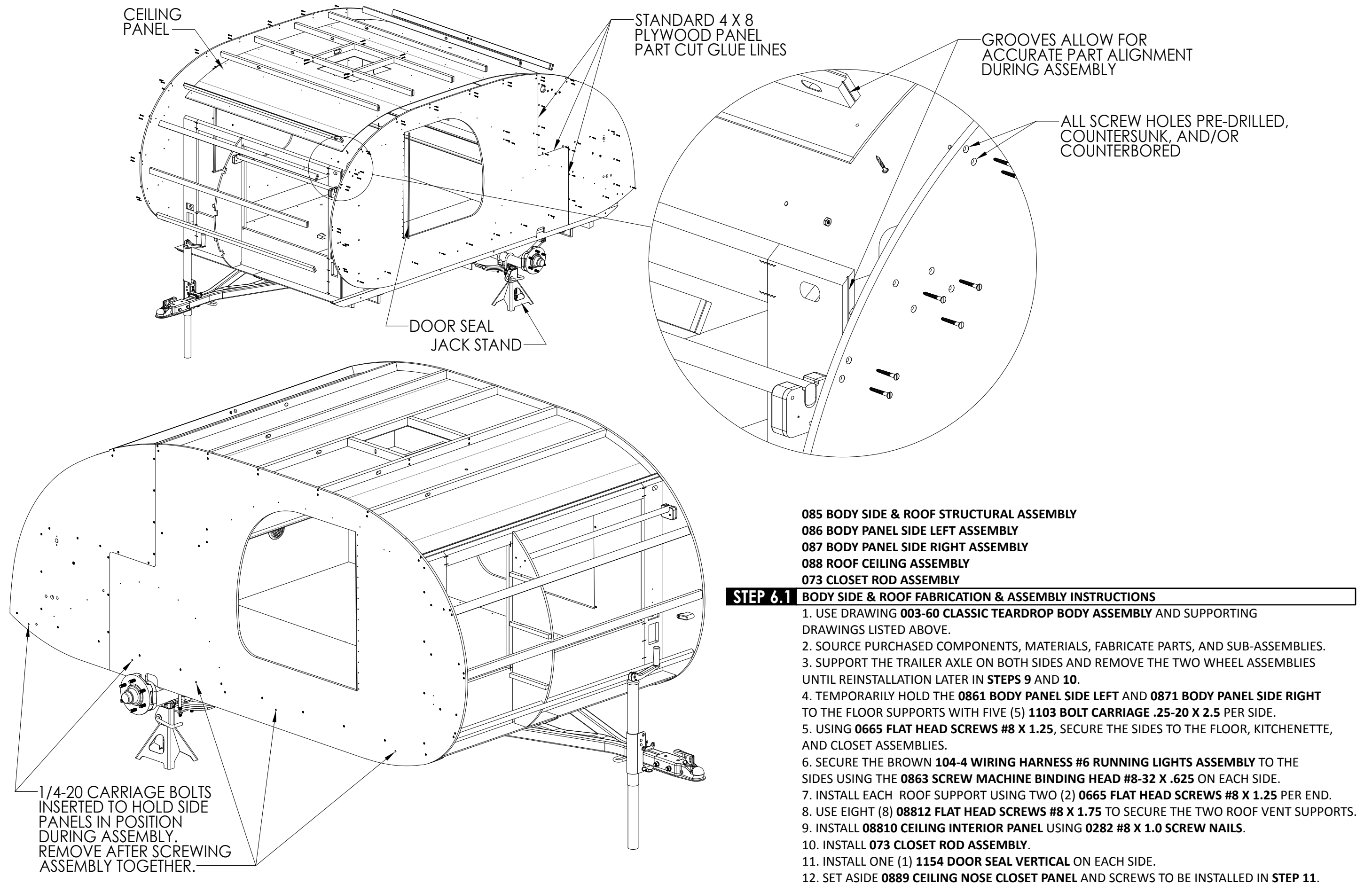


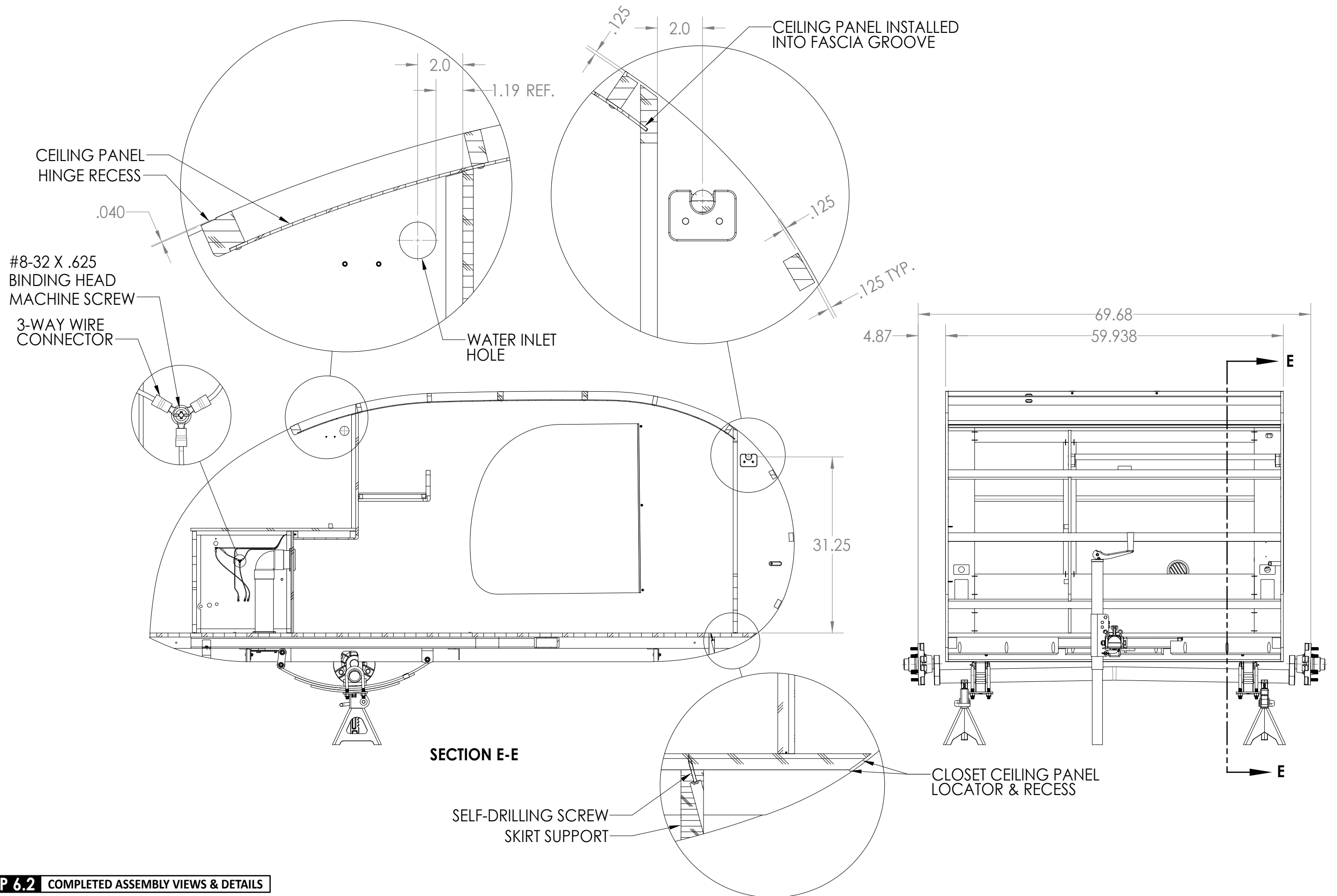
STEP 4.3 COMPLETED ASSEMBLY VIEWS & DETAILS

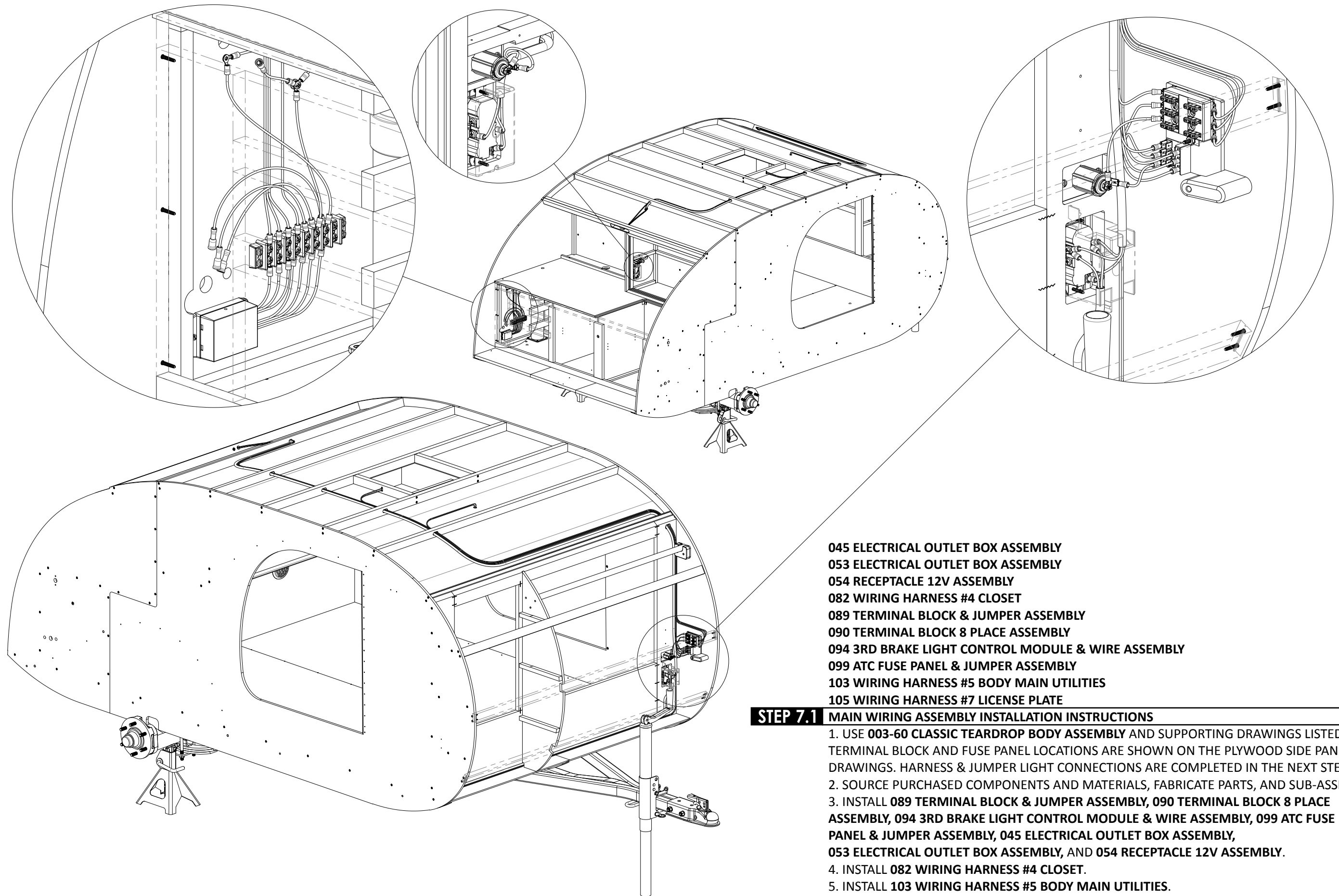


STEP 5 FABRICATE, ASSEMBLE, AND INSTALL CLOSET FASCIA FRAME & DIVIDER ASSEMBLY

1. USE DRAWING 003-60 CLASSIC TEARDROP BODY ASSEMBLY AND DRAWINGS LISTED ABOVE.
2. SOURCE PURCHASED COMPONENTS, MATERIALS, FABRICATE PARTS, AND SUB-ASSEMBLIES.
3. ASSEMBLE 0702, 0703, & 0704 SIDE SUPPORTS TO THE 0701 CLOSET DIVIDER AND SECURE TO THE 069 CLOSET FASCIA FRAME ASSEMBLY.
4. INSTALL THE FASCIA & DIVIDER ASSEMBLY TO THE 016 FLOOR ASSEMBLY AS DIMENSIONED.
5. SET ASIDE REMAINING CLOSET PARTS & ASSEMBLIES TO BE INSTALLED LATER IN STEP 8.



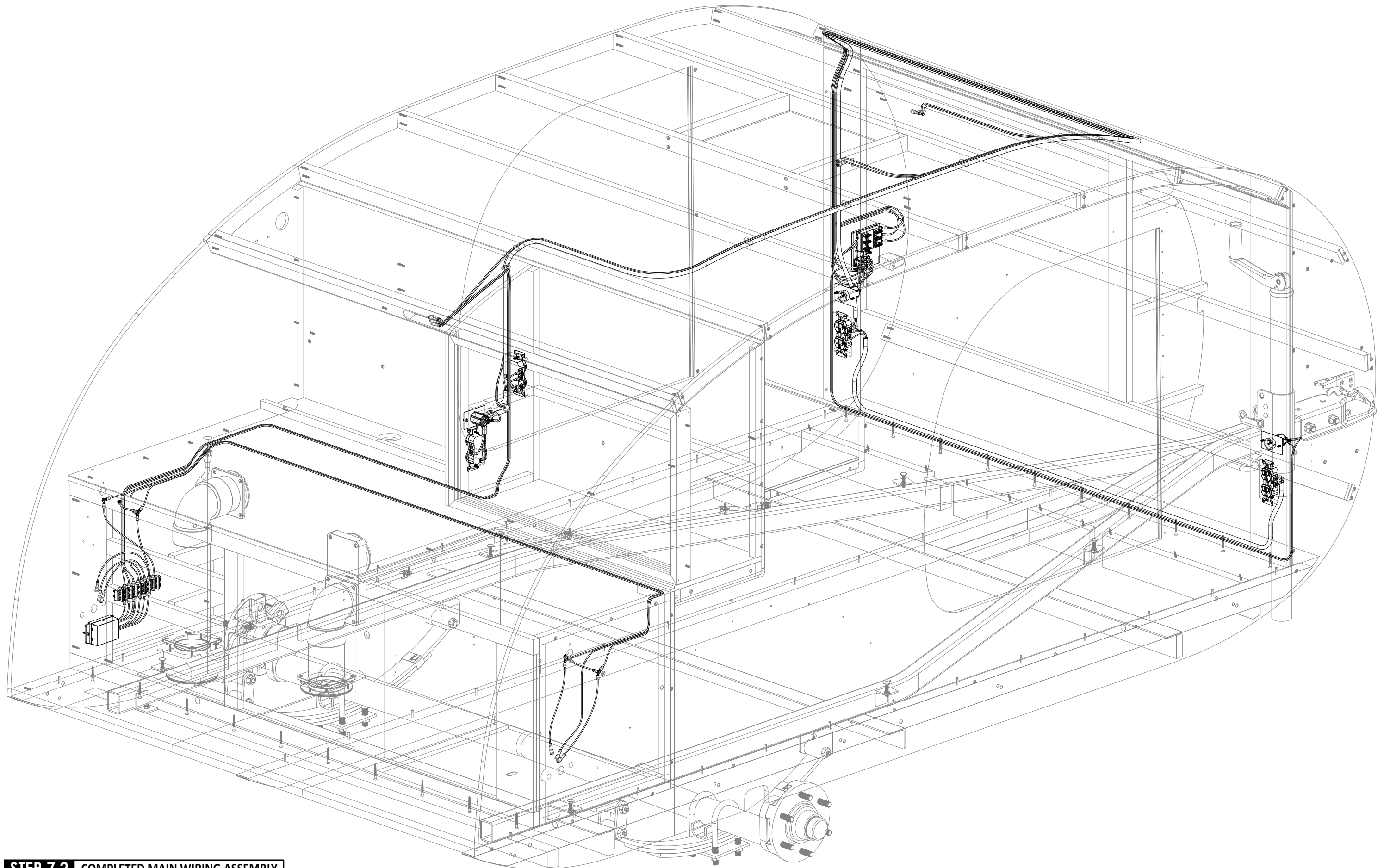




045 ELECTRICAL OUTLET BOX ASSEMBLY
 053 ELECTRICAL OUTLET BOX ASSEMBLY
 054 RECEPTACLE 12V ASSEMBLY
 082 WIRING HARNESS #4 CLOSET
 089 TERMINAL BLOCK & JUMPER ASSEMBLY
 090 TERMINAL BLOCK 8 PLACE ASSEMBLY
 094 3RD BRAKE LIGHT CONTROL MODULE & WIRE ASSEMBLY
 099 ATC FUSE PANEL & JUMPER ASSEMBLY
 103 WIRING HARNESS #5 BODY MAIN UTILITIES
 105 WIRING HARNESS #7 LICENSE PLATE

STEP 7.1 MAIN WIRING ASSEMBLY INSTALLATION INSTRUCTIONS

1. USE **003-60 CLASSIC TEARDROP BODY ASSEMBLY** AND SUPPORTING DRAWINGS LISTED ABOVE. TERMINAL BLOCK AND FUSE PANEL LOCATIONS ARE SHOWN ON THE PLYWOOD SIDE PANEL DRAWINGS. HARNESS & JUMPER LIGHT CONNECTIONS ARE COMPLETED IN THE NEXT STEP.
2. SOURCE PURCHASED COMPONENTS AND MATERIALS, FABRICATE PARTS, AND SUB-ASSEMBLIES.
3. INSTALL **089 TERMINAL BLOCK & JUMPER ASSEMBLY, 090 TERMINAL BLOCK 8 PLACE ASSEMBLY, 094 3RD BRAKE LIGHT CONTROL MODULE & WIRE ASSEMBLY, 099 ATC FUSE PANEL & JUMPER ASSEMBLY, 045 ELECTRICAL OUTLET BOX ASSEMBLY, 053 ELECTRICAL OUTLET BOX ASSEMBLY, AND 054 RECEPTACLE 12V ASSEMBLY.**
4. INSTALL **082 WIRING HARNESS #4 CLOSET.**
5. INSTALL **103 WIRING HARNESS #5 BODY MAIN UTILITIES.**
6. INSTALL **105 WIRING HARNESS #7 LICENSE PLATE.**



STEP 7.2 COMPLETED MAIN WIRING ASSEMBLY

BOM
RAW MATERIALS
WOOD
PLYWOOD

- 2 - .75" X 4' X 8' PLYWOOD
- [PA FLOOR, STORAGE/CLOSET PARTS]
- [PB FLOOR, GALLEY LID CURVED RIBS]
- 5 - .5" X 4' X 8' PLYWOOD
- [PC BODY PANEL RIGHT SIDE LARGE, DOOR]
- [PD BODY PANEL LEFT SIDE LARGE, DOOR]
- [PE CABINET COUNTERTOP, INTERIOR SHELF BOTTOM]
- [PF BODY PANEL LEFT & RIGHT SIDES SMALL, CLOSET DIVIDER & SHELVES]
- [PG CABINET PANELS/DIVIDERS/CENTER SHELF, CUPBOARD SIDE/SHELF, HVAC FLANGE WASHER]
- 1 - .375" X 4' X 8' PLYWOOD
- [PH CABINET/CLOSET/CUPBOARD DOORS, DRAWER FRONTS, STORAGE DIVIDERS, ELECTRICAL FRONT COVER]
- 1 - .25" X 4' X 4' PLYWOOD
- [PI INTERIOR SHELF TOP/ACCESS PANEL, CLOSET ROD ANTI-ROTATE PAD, ELECTRICAL COVER FRONT/SIDE]
- 3 - .125" X 5' X 5' PLYWOOD OR MASONITE
- [PJ CEILING TOP REAR]
- [PK CEILING TOP FRONT]
- [PL CEILING NOSE CLOSET, DRAWER BOTTOMS]
- CLEAR C SELECT HARDWOOD/SOFTWOOD
- 1 - 2.0" X 10" X 10' (1.5" X 9.25" NOMINAL) SOFTWOOD/HARDWOOD CLEAR
- [WA FLOOR STRUCTURE/REAR SKIRT SUPPORT, PROPANE SUPPORT, ELECTRICAL TOP COVER, HVAC FLANGE SUPPORT]
- 1 - 1.0" X 8" X 10' (7.25" NOMINAL) PLANED THICKNESS C SELECT SOFTWOOD/HARDWOOD
- [WB FRONT SKIRT SUPPORTS, ROOF SUPPORTS, INTERIOR SHELF BRACE, STORAGE SHROUD RAILS, ELECTRICAL COVER BRACE, PROPANE SUPPORT]
- 1 - .5" X 8.0" X 8' (7.25" NOMINAL) PLANED THICKNESS C SELECT SOFTWOOD/HARDWOOD
- [WC CABINET DRAWER FRONT MOUNT/REAR/SIDES, HVAC FLANGE SUPPORT]
- 1 - 1.0" X 10.0" X 10' (.75" X 9.25" NOMINAL) CLEAR PINE/FIR/SPRUCE
- [WD ROOF SUPPORTS]
- 2 - 1.0" X 12.0" X 8' (.75" X 11.25" NOMINAL) CLEAR PINE/FIR/SPRUCE
- [WE CABINET BRACING, DRAWER RAILS, WATER TANK SHIELD SUPPORT, ICEBOX FRAME]
- [WF SKIRT/GALLEY SUPPORTS, ELECTRICAL COVER MOUNTS, KILL SWITCH TOP COVER]
- 3 - 1.0" X 12.0" X 8' (.75" X 11.25" NOMINAL) C SELECT SOFTWOOD OR HARDWOOD
- [WG CABINET/CLOSET FASCIA PARTS, DOOR FRAMES, CUPBOARD FRAME, HVAC VENTS]
- [WH CLOSET FASCIA PARTS, GALLEY LID BOTTOM FRAME, CABINET CORNER MOLDING]
- [WI DOOR FRAMES, CLOSET HEADBOARD]
- 1 - 2.0" X 6.0" X 8' (1.5" X 5.5" NOMINAL) C SELECT HARDWOOD
- [WJ SHELF CORNER MOLDING, GALLEY LID FRAME/ROOF SUPPORT, HVAC INTAKE MOUNT]
- 1 - 1.0" OD X 37.188" DOWEL
- [WK CLOSET ROD] (NOT IN BOM ILLUSTRATIONS)

SHEET METAL
ALUMINUM

- 1 - .025" [22 GA] X 6" X 6" 5052-H32 ALUMINUM
- [GALLEY HINGE END CAPS] (NOT IN THE BOM ILLUSTRATIONS)
- 2 - .032" [20 GA] X 4' X 10' 5052-H32 ALUMINUM
- [AA EXTERIOR SIDE RIGHT/DOOR SIDE RIGHT]
- [AB EXTERIOR SIDE LEFT/DOOR SIDE LEFT]
- 1 - .032" [20 GA] X 4' X 8' 5052-H32 ALUMINUM
- [AC INTERIOR SIDES, DOOR/GALLEY/COUNTER U-TRIM, SHELF SUPPORTS, ICEBOX TRIM]
- 1 - .040" [18 GA] X 5' X 12' 5052-H32 ALUMINUM
- [AD ROOF PANEL]
- 2 - .040" [18 GA] X 5' X 10' 5052-H32 ALUMINUM
- [AE GALLEY LID EXTERIOR/INTERIOR PANELS, FRONT SKIRT, FLOOR COVER]
- [AF REAR SKIRT, COUNTERTOP, WATER TANK SHIELD, STORAGE TOP & BOTTOM SHROUDS/ENDS, ICEBOX INSIDE DOOR PANEL]
- 1 - .0747" [12 GA] X 24" X 5' 5052-H32 ALUMINUM
- [AG STORAGE BOTTOM/DIVIDER SUPPORTS, FLOOR TRIM]

GALVANIZED STEEL

- 1 - .0276" [24 GA] X 4' X 8' GALVANIZED STEEL
- [GA ICEBOX PARTS]

METAL PROFILES
TUBING

- 2 - 1.5" X 2.0" X 135.0" A513 STEEL 11 GAUGE [.120"] TUBING
- [SA SIDE RAILS]
- 1 - 1.5" X 2.0" X 33.75" A513 STEEL 11 GAUGE [.120"] TUBING
- [SA COUPLER TONGUE TUBE SUPPORT]

ROD

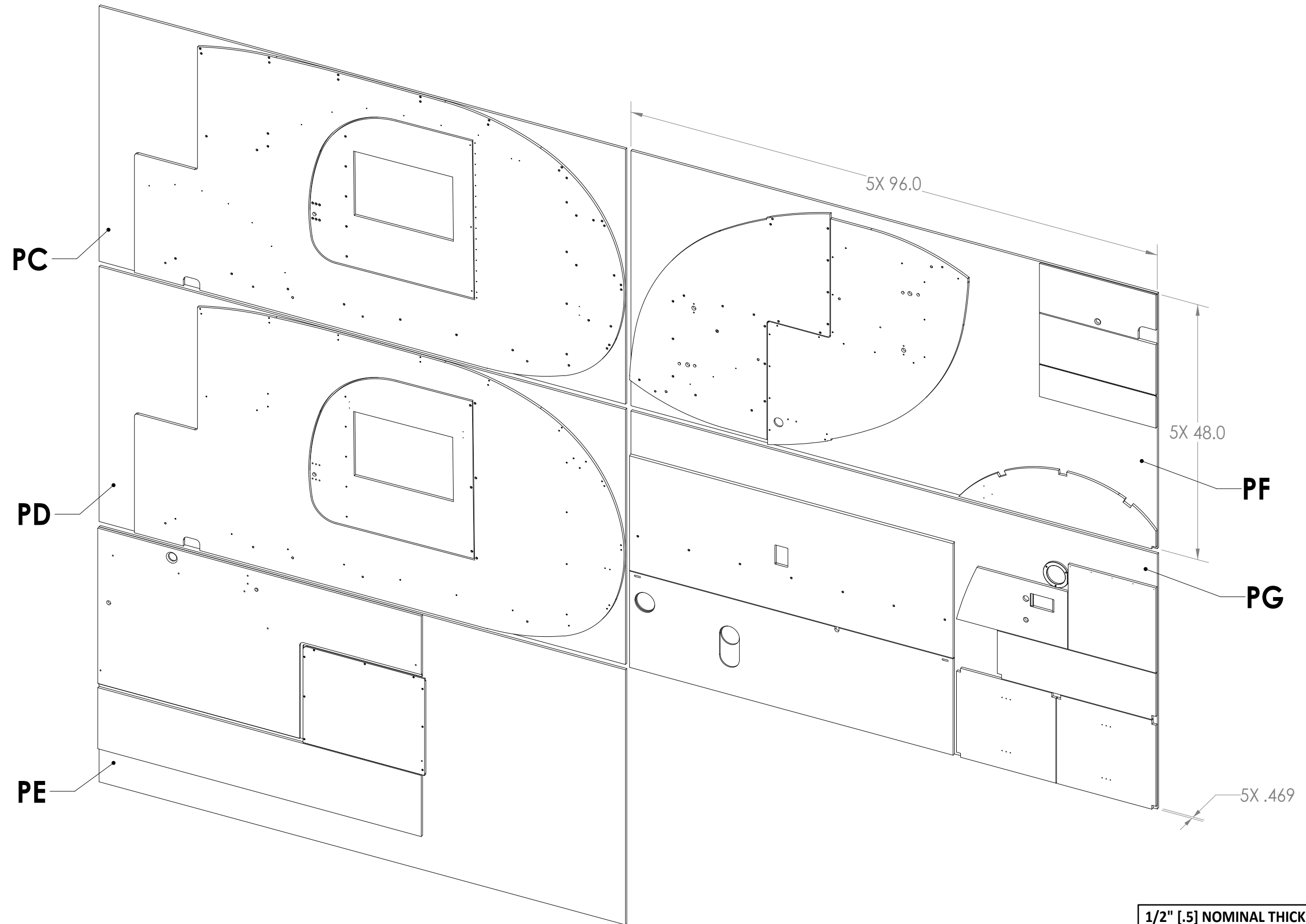
- 1 - .4375" X 15.25" A513 STEEL ROD
- [SB SAFETY CHAIN MOUNT]

ANGLE

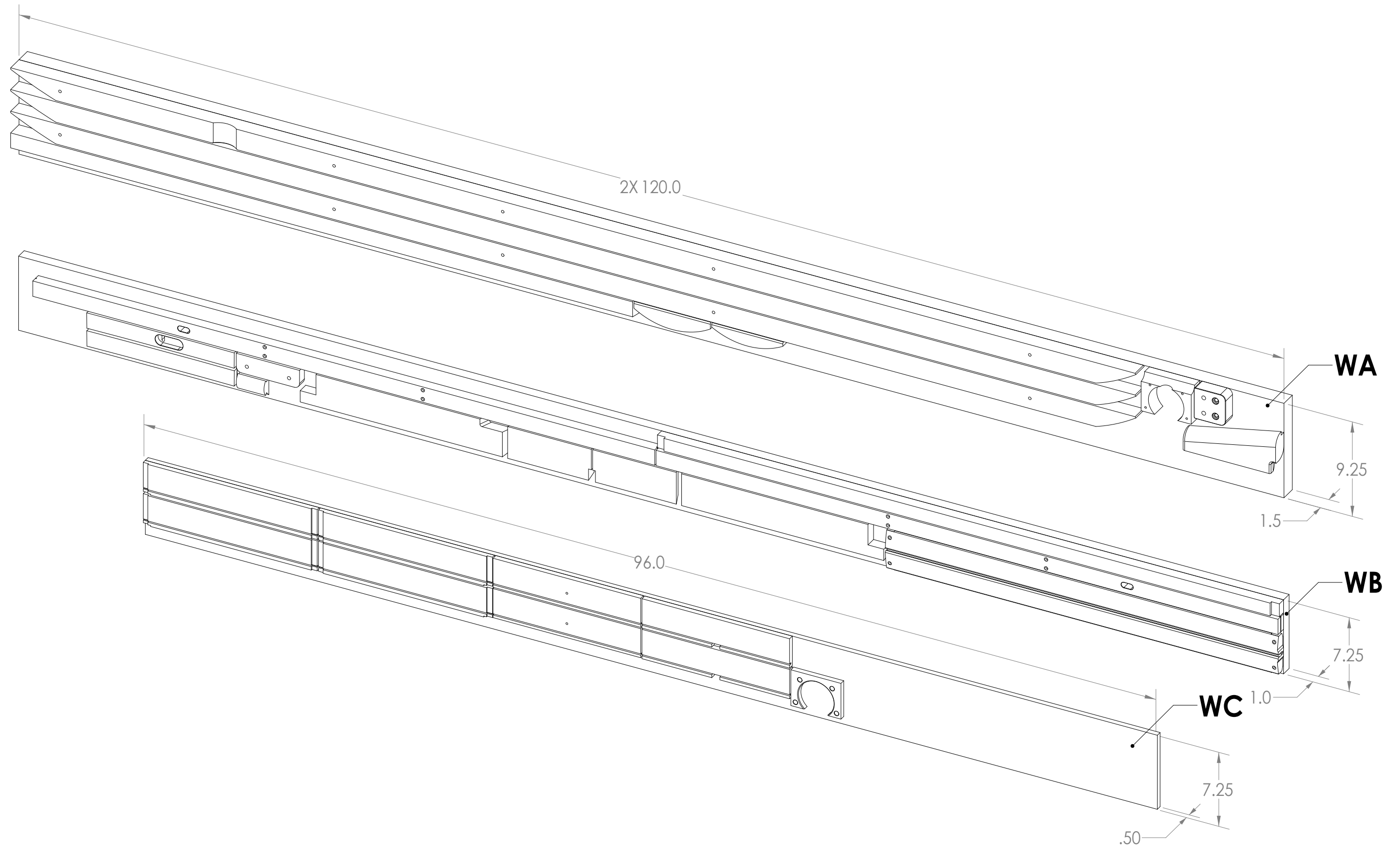
- 3 - .125" X 2.0" X 2.0" X 58.25" A36 STEEL ANGLE
- [SC CROSSMEMBERS]
- 1 - 1.5" X 1.5" X 10.0" A36 STEEL ANGLE [TO FABRICATE FIVE (5) PARTS]
- [SD ANGLE MOUNTS]
- 1 - 1.5" X 3.0" X 1.5" A36 STEEL ANGLE
- [SE ANGLE MOUNT LONG]
- 1 - 1.0" X 1.0" X 43.5" A36 STEEL ANGLE
- [SG STORAGE FRAME LEFT 8.0"]
- [SG STORAGE FRAME RIGHT 9.0"]
- [SG STORAGE FRAME CENTER 26.5"]

HINGE ASSEMBLY

- 1 - 5' HINGE ASSEMBLY *ZINC PLATED SHEET METAL FORMED
- [EF, EG GALLEY LID *IF NOT USING AN EXTRUSION 6063-T5 HINGE SET]



1/2" [.5] NOMINAL THICKNESS PLYWOOD
15/32" [.46875] ACTUAL



DIMENSIONALLY DRESSED SOFTWOOD/HARDWOOD

DRAWINGS LIST*

001-60 CLASSIC TEARDROP TRAILER ASSEMBLY

002-60 CLASSIC TRAILER FRAME ASSEMBLY

- 006-60 TRAILER FRAME ASSEMBLY
 - 0061 COUPLER TONGUE TUBE SUPPORT
 - 0062 SAFETY CHAIN MOUNT
 - 0063-60 SIDE RAIL TUBE LEFT
 - 0064-60 SIDE RAIL TUBE RIGHT
 - 0065-60 CROSSMEMBER ANGLE
 - 0066 ANGLE MOUNT
 - 0067 ANGLE MOUNT LONG
 - 01121 SPRING HANGER FRONT
 - 01131 SPRING HANGER REAR
- 007 JACK SCREW MOUNT ASSEMBLY
 - 007-1 JACK SCREW U-BODY ASSEMBLY
 - 0071 JACK SCREW U-BODY
 - 007-2 JACK SCREW RIVET NUT MOUNT PLATE ASSEMBLY
 - 0072 JACK SCREW RIVET NUT MOUNT PLATE
 - 0073 RIVET NUT .25-20 X .58
 - 0074 RIVET SOLID DOMED HEAD .25 OD X .375
 - 007-3 JACK SCREW TUBE MOUNT CLAMP ASSEMBLY
 - 0075 JACK SCREW TUBE MOUNT CLAMP
 - 0076 BOLT HEX HEAD .25-20 X .875
 - 0077 JACK SCREW MOUNT BRACKET TOP
 - 0078 JACK SCREW MOUNT PIVOT SHAFT
 - 0079 E-CLIP HEAVY DUTY .5
 - 007-4 JACK SCREW MOUNT BRACKET ASSEMBLY BOTTOM
 - 00710 JACK SCREW MOUNT BRACKET BOTTOM
 - 00711 BOLT HEX HEAD .25-20 X 2.75
 - 1104 WASHER FLAT .25 .281 ID X .625 OD
 - 007-6 QUICK-RELEASE PIN .5 X 2.5
- 008 JACK SCREW TOP WIND DIRECT WELD ASSEMBLY
- 009 COUPLER ASSEMBLY BOLT-ON
 - 009-1 COUPLER ASSEMBLY
 - 0091 BOLT HEX HEAD .5-20 X 4
 - 0092 WASHER SPLIT LOCK .512 ID X .869 OD
 - 0093 NUT HEX .5-20
- 010 AXLE & LEAF SPRING ASSEMBLY
 - 010-1 AXLE & HUB ASSEMBLY
 - 010-60 AXLE ASSEMBLY
 - 01011 AXLE TUBE ROUND
 - 01012 AXLE DROP PLATE
 - 01013 SPINDLE 1.375 X 1.063 BEARINGS
 - 01014 SPRING SEAT
- 011 LEAF SPRING ASSEMBLY
 - 011-1 DOUBLE EYE LEAF SPRING ASSEMBLY

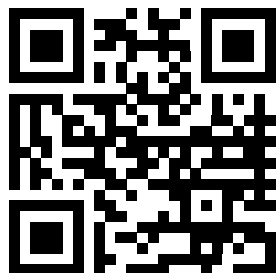
- 01114 BUSHING .568 ID X .688 OD X 1.77
- 011-2 SPRING HANGER ASSEMBLY FRONT
- 01121 SPRING HANGER FRONT
- 011-3 SPRING HANGER ASSEMBLY REAR
- 01131 SPRING HANGER REAR
- 011-4 SHACKLE LINK ASSEMBLY
- 01141 SHACKLE LINK
- 010-5 U-BOLT KIT
- 01051 TIE PLATE
- 01052 U-BOLT .5-20 X 5.5
- 01053 HEX NUT LOCK .5-20
- 010-6 BOLT SHACKLE WET HEX .438-20 X 2.75
- 01123 HEX NUT LOCK .438-20
- 012 HUB 6 LUG ON 5.5 ASSEMBLY
 - 0121 HUB ASSEMBLY 008-251-05
 - 0122 INNER BEARING RACE L68111
 - 0123 INNER BEARING ASSEMBLY L68149
 - 0124 GREASE SEAL 010-019-00
 - 0125 OUTER BEARING RACE L44610
 - 0126 OUTER BEARING ASSEMBLY L44649
 - 0127 OUTER BEARING WASHER
 - 0128 CASTLE NUT 1-14
 - 0129 COTTER PIN
 - 01210 GREASE CAP
- 013 WHEEL & TIRE ASSEMBLY
- 014 WHEEL ASSEMBLY 6 BOLT X 5.5
 - 0131 R16 INNER TUBE
 - 0132 INNER TUBE VALVE BUSHING [OPTIONAL]
 - 0133 TIRE 600-16
 - 0134 BEAUTY RING
 - 01211 LUG NUT .5-20
- 015 HUBCAP ASSEMBLY
 - 0021-59 SKIRT PANEL CENTER SUPPORT REAR
 - 0022-59 SKIRT PANEL SUPPORT REAR
 - 0023-59 SKIRT PANEL SUPPORT FRONT
 - 0024 BOLT CARRIAGE .25-20 X 1.5
 - 0025 BOLT CARRIAGE .25-20 X 1.25
 - 0026 WASHER SPLIT LOCK .26 ID X .487 OD
 - 0027 NUT HEX .25-20
 - 002-1 SAFETY CHAIN ASSEMBLY
 - 002-2 QUICK LINK ASSEMBLY
- 003-60 CLASSIC TEARDROP BODY ASSEMBLY
- 016 FLOOR ASSEMBLY
 - 0161 FLOOR PANEL
 - 0162 FLOOR SUPPORT LEFT
 - 0163 FLOOR SUPPORT CENTER
 - 0164 FLOOR SUPPORT RIGHT

BUILD A CLASSIC TEARDROP TRAILER

USING PLANS DEVELOPED BY AN INDUSTRIAL DESIGNER WITH OVER 30 YEARS' EXPERIENCE IN DESIGN FOR MANUFACTURE. THIS TEARDROP TRAILER DESIGN IS BASED ON THE ORIGINAL KEN-SKILL MODEL 10 BUILT IN 1946-47. YOU WILL UNDERSTAND HOW THESE BEAUTIFUL TRAILERS WERE DETAILED AND BUILT, AS YOU BUILD AN IMPRESSIVE VINTAGE TEARDROP TRAILER YOURSELF. ALL MAJOR EXTERIOR COMPONENTS ARE METAL AS THE ORIGINALS WERE. WHEELS, HUBCAPS, AND TAIL LIGHTS ARE OEM AFTERMARKET, OR NOS AUTOMOTIVE ASSEMBLIES. SIDE MARKER LIGHTS, DOOR HANDLES, LATCHES, AND CABINET HARDWARE ARE ALSO VINTAGE DESIGNS.

PLANS FOR THE CLASSIC TEARDROP TRAILER

ARE VERY COMPREHENSIVE AND CLEAR. DRAWINGS ARE DIMENSIONED AND DETAILED IN-DEPTH, ENABLING YOU TO MAKE PARTS AND ASSEMBLIES USING STANDARD WOODWORKING AND METALWORKING TOOLS. CNC ROUTERS, LOCAL SHOPS, OR RAPID PROTOTYPE SERVICES CAN ALSO BE UTILIZED. FOR CONFIDENT SOURCING OF PURCHASED MATERIALS, PARTS, OR HARDWARE, INDUSTRY TERMINOLOGY AND SPECIFICATIONS ARE USED. IN MANY CASES, MANUFACTURER PART NUMBERS ARE SUPPLIED. AS YOU FOLLOW EACH WELL-ILLUSTRATED STEP OF THIS MANUAL, AND AS YOU REFER TO THE PLANS DURING YOUR BUILD, YOU WILL HAVE A BEAUTIFUL CLASSIC TEARDROP TRAILER WHEN COMPLETED.



CLASSIC TEARDROP TRAILER DESIGN

UPDATES INCLUDE 12V AND 120V OUTLETS WITH GROUNDED ELECTRICAL WIRING HARNESSES USING ELECTRICAL CONNECTORS, TO BE INSTALLED AS COMPLETE ASSEMBLIES. A 3RD BRAKE LIGHT HAS BEEN ADDED TO THE LICENSE PLATE LIGHT. SIX INCHES OF TRAILER WIDTH WAS ADDED TO EACH SIDE, ALLOWING FOR USE OF AN RV QUEEN MATTRESS AND AN UNOBTRUSIVE HVAC HOOKUP. THE PROPANE TANK IS REMOVABLE FOR FILLING.

TOWING THE CLASSIC TEARDROP TRAILER

IS EASY WITH A SMALL CAR, TRUCK, OR 4X4 VEHICLE DUE TO ITS VERY LOW WEIGHT OF ABOUT 850 LBS. A CLEVER JACK SCREW MOUNT DESIGN ALLOWS FOR THE JACK TO BE POSITIONED AND STORED HORIZONTALLY DURING TRAVEL. AN INNOVATIVE FRONT STORAGE UNIT HOUSES THE PROPANE TANK, 12V BATTERY, AND 12V/120V POWER SUPPLY, WHICH CAN BE CONNECTED TO SHORE LINE POWER. A GENERATOR HOOKUP CAN ALSO BE USED FOR OFF-THE-GRID OR OFF-ROAD CAMPING.